

*Energy Efficient,
Self-Sealing*

QUICK CONNECT™ Start Collar



HAVACO Technologies QUICK CONNECT™ Start Collar has revolutionized the HVAC industry! The superior quality plastic QUICK CONNECT™ Start Collar is specifically designed to attach in seconds, eliminate installer injury and seal air tight.

The QUICK CONNECT™ Start Collar Advantage

- **INSTALLS FASTER**—Pre-Install Flex Duct!
- **REDUCES INJURY**—No tabs to bend back.
- **SEALS TIGHTER**—Greatly minimize air/energy loss.
- **2-SIDED GASKET**—Reduces extra sealant costs.
- **GREEN BUILDING PRODUCT**
- **FIRE RATED** for use in a Plenum UL2043.
- **LESS CONDUCTIVE** than metal.
- **COST EFFECTIVE** Alternative.
- **REPLACES METAL** tab and stick on collars.

- No sharp edges
- Dent proof
- Lightweight
- Rust proof

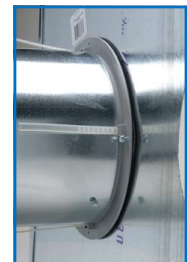


Available in: 5", 6", 7", 8", 10" and 12" sizes. Pre-installed Damper models available in each size.

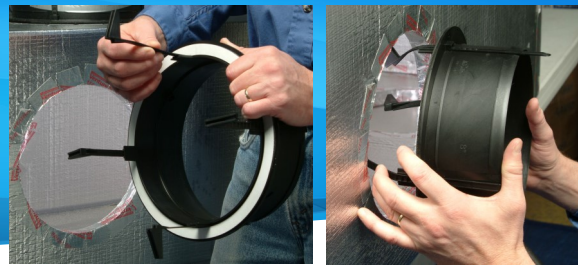


ONE COLLAR

The QUICK CONNECT™ Start Collar can be used with 1", 1.5", 2" duct board and sheet metal trunk lines, and is sized for metal pipe and flex duct.



QUICK CONNECT™ Start Collar



MFT CODE	DESCRIPTION	YOUR PRICE
HT-0503	5" COLLAR	
HT-0504	5" WITH DAMPER	
HT0603	6" COLLAR	
HT-0604	6" WITH DAMPER	
HT-0703	7" COLLAR	
HT-0704	7" WITH DAMPER	
HT-0803	8" COLLAR	
HT-0804	8" WITH DAMPER	
HT-1003	10" COLLAR	
HT-1004	10" WITH DAMPER	
HT-1203	12" COLLAR	
HT-1204	12" WITH DAMPER	

WHERE TO BUY

Call us toll free
1-844-836-6793 or visit
www.HavacoTechnologies.com
for more information, to locate
a distributor, or request a free
sample. HaVACo Technologies
Inc. products are available across
the U.S. and in several key
International Markets.

FASTER INSTALL

The QUICK CONNECT™ Start Collar creates a faster connection to both duct board and sheet metal trunk lines. It features a double sided adhesive gasket, four Quick Zips and predrilled sheet metal screw holes for attachment in seconds!

STAY IN PLACE DAMPER

The QUICK CONNECT™ Start Collar damper design on the 5", 6", 7" and 8" models is a ratchet system which can lock the damper in six different positions and includes a ring on the inside of the collar for a tight close. The damper handle sets off from the collar and can be either covered by the flex duct or left exposed depending on your installation preference. The 10" and 12" feature a pre-installed metal damper with 2" stand off handle.

START TO FINISH LINE

HaVACo products are all MADE IN THE USA of superior quality, high density plastic. The line features start collars, reducers, wyes, connectors, diffusers, register boots, 2x2 supply/returns and magnetic diffusers for all your residential and commercial construction needs.

GREEN BUILDING PRODUCTS

The QUICK CONNECT™ Start Collar is the energy efficient and time saving alternative you've been waiting for, by greatly reducing air/energy loss and saving considerable installation time (based on method of sealing and installation).

FIRE TESTED

The QUICK CONNECT™ Start Collar is UL2043 Classified. Both UL and NFPA 90A documents have clarified the applicability of UL2043 for discrete products used in the air handling space. Additionally NFPA90A was revised to state that UL2043 is to be used to assess "other discrete products" - not only loud speakers and recessed lighting fixtures. The updated scope states that UL2043 is the alternate test method used when the UL723 (E-84 Steiner Tunnel 25/50 test) is not applicable and that this standard is no longer limited to just electrical products.

CODE ACCEPTED

The QUICK CONNECT™ Start Collar is currently being installed across the U.S. and accepted by code. The QUICK CONNECT™ Start Collar meets all minimum code requirements in its design.



Contact Us Today **1-844-836-6793**